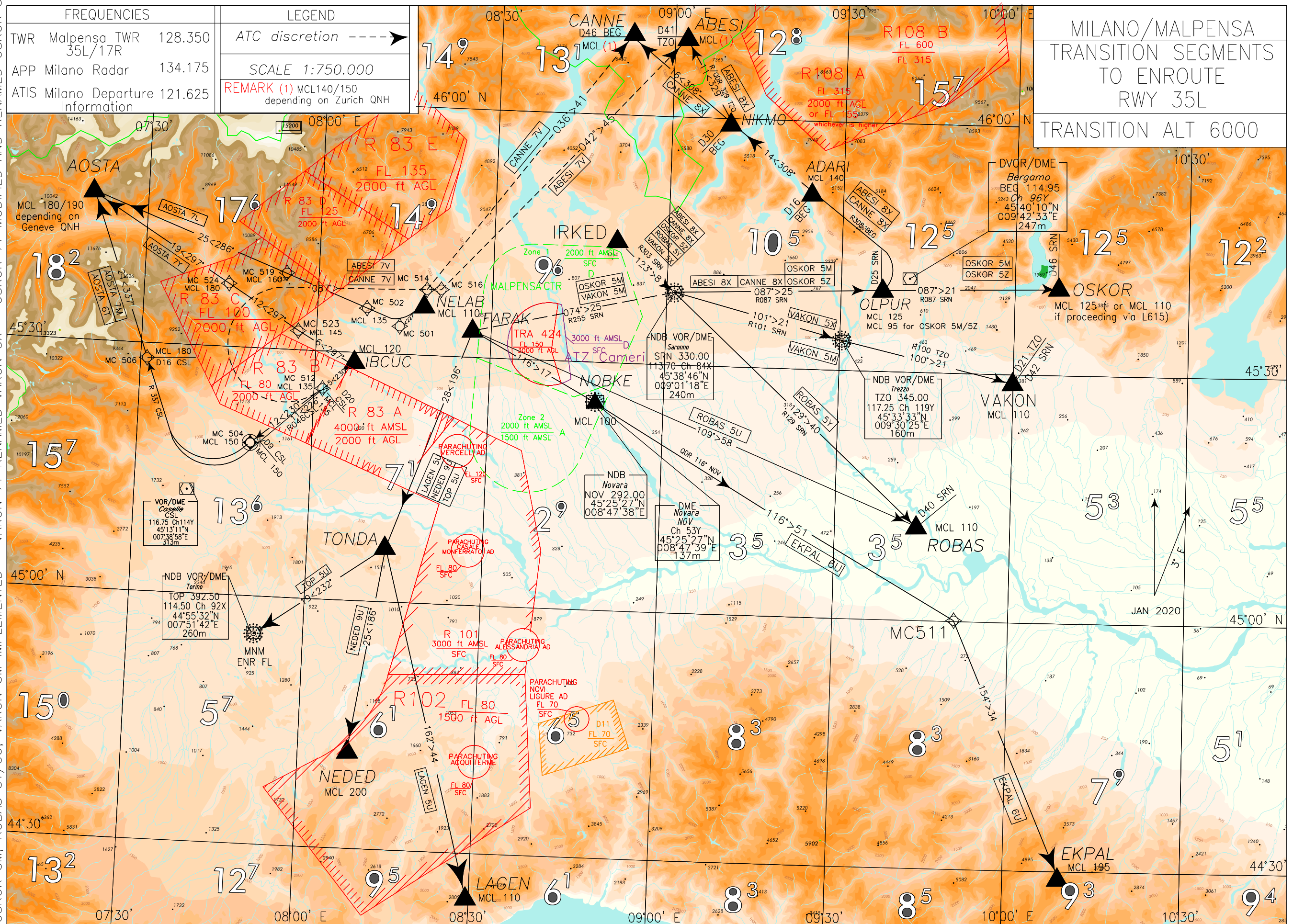


CHANGE: ABESI 7Y, CANNE 7Y, EKPAL 5Y, LOGDI 5Y/5U, OSBUL 5Y/5U, PIKOT 5Y/5U WITHDRAWN, MAGNETIC VARIATION UPDATED
OSKOR 5M, ROBAS 5Y/5U, VAKON 5M IMPLEMENTED - VAKON 7Y RENAMED VAKON 5X - OSKOR 7Y MODIFIED AND RENAMED OSKOR 5Z

AIP - Italia

AD 2 LIMC 6-27



ENAV - Roma

AIRAC effective date 27 JAN 2022 (A13/21)

**TRANSITION SEGMENTS TO ENROUTE DESCRIPTION
RWY 35L**

REMARK 1

The below coding tables, limited to Conventional Navigation, are provided on trial basis and for data coding purposes only.

REMARK 2 (for CANNE 7V and ABESI 7V)

For the purpose of obstacle clearance the protection of the turn was drawn applying DOC. 8168 (PANS-OPS) methodology and criteria established for holding areas with following distinctive features:

- IAS MAX 280 KT during turn, if performed with bank angle 15°;
- IAS MAX 315 KT during turn, if performed with bank angle 20°.

ABESI 8X

IRKED proceed on TR 123° (RDL/QDR 303 SRN VOR NDB) to SRN VOR NDB/DME, turn left on TR 087° (RDL/QDR 087 SRN VOR NDB) to OLPUR (RDL/QDR 087/25 NM SRN VOR NDB/DME), then turn left until join and follow RDL 308 BEG VOR (TR 308°) and proceed via ADARI (RDL 308/16 NM BEG VOR/DME) – NIKMO (RDL 308/30 NM BEG VOR/DME), then turn right until join and follow RDL/QDR 329 TZO VOR NDB (TR 329°) direct to ABESI (RDL/QDR 329/41 NM TZO VOR NDB/DME).

MCL: OLPUR, FL125; ADARI, FL140; ABESI *

Path Terminator	Waypoint Name	Fly Over	Course °M(°T)	Magnetic Variation	Distance (NM)	Turn Direction	Altitude (ft)	Speed Limit (kt)	Navigation Specification
IF	IRKED	-	-	-	-	-	-	-	RNAV 1
TF	SRN	-	123 (125.8)	-	8.0	-	-	-	RNAV 1
TF	OLPUR	Y	087 (089.5)	-	25.1	-	FL125	-	RNAV 1
CF	ADARI	-	308 (310.9)	3°	-	L	FL140		RNAV 1
TF	NIKMO	-	308 (310.8)	-	13.6	-	-	-	RNAV 1
TF	ABESI	-	329 (331.8)	-	11.4	-	FL140/150*	-	RNAV 1

*FL140/150 depending on Zurich QNH

ABESI 7V (ATC discretion - see REMARK 2)

Path Terminator	Waypoint Name	Fly Over	Course °M(°T)	Magnetic Variation	Distance (NM)	Turn Direction	Altitude (ft)	Speed Limit (kt)	Navigation Specification
IF	IBCUC	-	-	-	-	-	FL120	-	RNAV1
TF	MC512	Y	230 (232.7)	-	5.0	-	FL135	-	RNAV1
CF	MC516	-	087 (090)	3°	-	R	-	-	RNAV1
TF	ABESI	-	042 (44.9)	-	44.6	-	FL140/150*	-	RNAV1

* MCL: FL140/150 depending on Zurich QNH

AOSTA 7L

Path Terminator	Waypoint Identifier	Fly Over	Course °M(°T)	Magnetic Variation	Distance (NM)	Turn Direction	Altitude (ft)	Speed Limit (kt)	Navigation Specification
IF	NELAB	-	-	-	-	-	FL 110	-	RNAV1
TF	MC501	-	227 (230.1)	-	5.0	-	-	-	RNAV1
TF	MC502	-	286 (288.4)	-	3.2	-	FL135	-	RNAV1
TF	MC519	-	286 (288.3)	-	14.6	-	FL 160	-	RNAV1
TF	AOSTA	-	285 (288.1)	-	25.1	-	FL180/190*	-	RNAV1

* MCL: FL 180/190 in dipendenza di Ginevra QNH/depending on Geneve QNH

AOSTA 7M

Path Terminator	Waypoint Name	Fly Over	Course °M(°T)	Magnetic Variation	Distance (NM)	Turn Direction	Altitude (ft)	Speed Limit (kt)	Navigation Specification
IF	IBCUC	-	-	-	-	-	FL120	-	RNAV1
TF	MC512	-	230 (232.7)	-	5.0	-	FL135	-	RNAV1
TF	MC504	Y	230 (232.7)	-	12.0	-	FL150	-	RNAV1
CF	MC506	-	337 (339.8)	3°	-	R	FL180	-	RNAV1
TF	AOSTA	-	337 (339.8)	-	20.9	-	FL180/190*	-	RNAV1

* MCL FL180/190 depending on Geneve QNH

AOSTA 6T

From IBCUC proceed on TR 226° (RDL 046 CSL VOR), at 9NM CSL DME turn right until joining RDL 337 CSL VOR to AOSTA (RDL 337/37 NM CSL VOR/DME).

MCL: IBCUC, FL120; RDL046/20NM CSL VOR/DME, FL135; RDL046/9NM CSL VOR/DME FL150; RDL 337/16NM CSL VOR/DME, FL 180; AOSTA *

* MCL FL180/190 depending on Geneve QNH

AOSTA 7Y

Path Terminator	Waypoint Name	Fly Over	Course °M(°T)	Magnetic Variation	Distance (NM)	Turn Direction	Altitude (ft)	Speed Limit (kt)	Navigation Specification
IF	IBCUC	-	-	-	-	-	FL120	-	RNAV1
TF	MC523	-	297 (300.0)	-	6.0	-	FL145	-	RNAV1
TF	MC524	-	297 (299.9)	-	12.0	-	FL180	-	RNAV1
TF	AOSTA	-	297 (299.7)	-	18.6	-	FL180/190*	-	RNAV1

CANNE 8X

IRKED proceed on TR 123° (RDL/QDR 303 SRN VOR NDB) to SRN VOR NDB/DME, then turn left on TR 087° (RDL/QDR 087 SRN VOR NDB) to OLPUR (RDL/QDR 087/25 NM SRN VOR NDB/DME), then turn left until join and follow RDL 308 BEG VOR (TR 308°) and proceed via ADARI (RDL 308/16 NM BEG VOR/DME) – NIKMO (RDL 308/30 NM BEG VOR/DME) - CANNE (RDL 308/46 NM BEG VOR/DME).

MCL: OLPUR, FL125; ADARI, FL140; CANNE *

Path Terminator	Waypoint Name	Fly Over	Course °M(°T)	Magnetic Variation	Distance (NM)	Turn Direction	Altitude (ft)	Speed Limit (kt)	Navigation Specification
IF	IRKED	-	-	-	-	-	-	-	RNAV 1
TF	SRN	-	123 (125.8)	-	8.0	-	-	-	RNAV 1
TF	OLPUR	Y	087 (089.5)	-	25.1	-	FL125	-	RNAV 1
CF	ADARI	-	308 (310.9)	3°	-	L	FL140	-	RNAV 1
TF	NIKMO	-	308 (310.8)	-	13.6	-	-	-	RNAV 1
TF	CANNE	-	308 (310.7)	-	16.0	-	FL140/150*	-	RNAV 1

* FL140/150 depending on Zurich QNH

CANNE 7V (ATC discretion – see REMARK 2)

Path Terminator	Waypoint Name	Fly Over	Course °M(°T)	Magnetic Variation	Distance (NM)	Turn Direction	Altitude (ft)	Speed Limit (kt)	Navigation Specification
IF	IBCUC	-	-	-	-	-	FL120	-	RNAV1
TF	MC512	Y	230 (232.7)	-	5.0	-	FL135	-	RNAV1
CF	MC514	-	087 (090.0)	3°	-	R	-	-	RNAV1
TF	CANNE	-	036 (039.1)	-	41.3	-	FL140/150*	-	RNAV1

* MCL FL140/150 depending on Zurich QNH

EKPAL 6U

FARAK proceed on TR 116° (QDR 296° NOV NDB) to NOBKE, then continue on TR 116° (QDR 116° NOV NDB) until join and follow RDL 154 TZO VOR direct to EKPAL (RDL 154/70 NM TZO VOR/DME).

MCL: NOV NDB, FL 100; EKPAL, FL 195

Path Terminator	Waypoint Name	Fly Over	Course °M(°T)	Magnetic Variation	Distance (NM)	Turn Direction	Altitude (ft)	Speed Limit (kt)	Navigation Specification
IF	FARAK	-	-	-	-	-	-	-	RNAV 1
TF	NOBKE	-	115 (118.1)	-	16.5	-	FL100	-	RNAV 1
TF	MC511	-	116 (119.2)	-	51.3	-	-	-	RNAV 1
TF	EKPAL	-	154 (156.6)	-	34.0	-	FL 195	-	RNAV 1

LAGEN 5U

Path Terminator	Waypoint Name	Fly Over	Course °M(°T)	Magnetic Variation	Distance (NM)	Turn Direction	Altitude (ft)	Speed Limit (kt)	Navigation Specification
IF	FARAK	-	-	-		-	-	-	RNAV 1
TF	TONDA	-	196 (199.2)	-	28.3	-	-	-	RNAV 1
TF	LAGEN	-	162 (164.9)	-	44.4	-	FL110	-	RNAV 1

NEDED 9U

Path Terminator	Waypoint Name	Fly Over	Course °M(°T)	Magnetic Variation	Distance (NM)	Turn Direction	Altitude (ft)	Speed Limit (kt)	Navigation Specification
IF	FARAK	-	-	-	-	-	-	-	RNAV 1
TF	TONDA	-	196 (199.2)	-	28.3	-	-	-	RNAV 1
TF	NEDED	-	186 (188.7)	-	25.2	-	FL200	-	RNAV 1

OSKOR 5M (ATC discretion)

FARAK proceed on TR 074° (RDL 255 SRN VOR) to SRN VOR/DME, then turn left on RDL 087 SRN VOR (TR087°) to OLPUR, then continue on TR087° (RDL 087 SRN VOR) direct to OSKOR (RDL 087/46 SRN VOR/DME).

MCL: OLPUR, FL95; OSKOR, *

Path Terminator	Waypoint Identifier	Fly Over	Course °M(°T)	Magnetic Variation	Distance (NM)	Turn Direction	Altitude (ft)	Speed Limit (kt)	Navigation Specification
IF	FARAK	-	-	-	-	-	-	-	RNAV 1
TF	SRN	-	074 (076.9)	-	24.7	-	-	-	RNAV 1
TF	OLPUR	-	087 (089.5)	-	25.1	-	FL95	-	RNAV 1
TF	OSKOR	-	087 (089.7)	-	20.9	-	FL125/110*	-	RNAV 1

* FL125 (or FL110 if proceeding via L615)

OSKOR 5Z

IRKED proceed on TR 123° (RDL 303 SRN VOR) to SRN VOR/DME, then turn left on RDL 087 SRN VOR (TR087°) to OLPUR (RDL/QDR 087/25 NM SRN VOR NDB/DME), then continue on RDL 087 SRN VOR (TR087°) direct to OSKOR (RDL 087/46 SRN VOR/DME).

MCL: OLPUR, FL95; OSKOR, *

Path Terminator	Waypoint Identifier	Fly Over	Course °M(°T)	Magnetic Variation	Distance (NM)	Turn Direction	Altitude (ft)	Speed Limit (kt)	Navigation Specification
IF	IRKED	-	-	-	-	-	-	-	RNAV 1
TF	SRN	-	123 (125.8)	-	8.0	-	-	-	RNAV 1
TF	OLPUR	-	087 (089.5)	-	25.1	-	FL95	-	RNAV 1
TF	OSKOR	-	087 (089.7)	-	20.9	-	FL125/110*	-	RNAV 1

* FL125 (or FL110 if proceeding via L615)

ROBAS 5Y

IRKED proceed on TR 123° (RDL 303 SRN VOR) to SRN VOR/DME, then proceed on TR 129° (RDL 129 SRN VOR) direct to ROBAS (RDL 129/40 NM SRN VOR/DME).

MCL: ROBAS, FL110

Path Terminator	Waypoint Identifier	Fly Over	Course °M(°T)	Magnetic Variation	Distance (NM)	Turn Direction	Altitude (ft)	Speed Limit (kt)	Navigation Specification
IF	IRKED	-	-	-	-	-	-	-	RNAV1
TF	SRN	-	123 (125.8)	-	8.0	-	-	-	RNAV1
TF	ROBAS	-	129 (132.1)	-	40.3	-	FL110	-	RNAV1

ROBAS 5U

Path Terminator	Waypoint Identifier	Fly Over	Course °M(°T)	Magnetic Variation	Distance (NM)	Turn Direction	Altitude (ft)	Speed Limit (kt)	Navigation Specification
IF	FARAK	-	-	-	-	-	-	-	RNAV1
TF	ROBAS	-	109 (111.4)	-	58.2	-	FL110	-	RNAV1

TOP 5U

Path Terminator	Waypoint Identifier	Fly Over	Course °M(°T)	Magnetic Variation	Distance (NM)	Turn Direction	Altitude (ft)	Speed Limit (kt)	Navigation Specification
IF	FARAK	-	-	-	-	-	-	-	RNAV1
TF	TONDA	-	196 (199.2)	-	28.3	-	-	-	RNAV1
TF	TOP	-	232 (235.0)	-	19.2	-	MNM ENR FL *	-	RNAV1

* according to the next ATS route segment

VAKON 5M (ATC discretion)

FARAK proceed on TR 074° (RDL/QDR 255° SRN VOR NDB) to SRN VOR NDB/DME, then continue on TR 101° (RDL /QDR 101° SRN VOR/NDB or RDL/QDR 282 TZO VOR NDB) to TZO VOR NDB, then TR 100° (RDL/QDR 100° TZO VOR NDB or RDL 101 SRN VOR) direct to VAKON (RDL/QDR 100/21 NM TZO VOR NDB/DME or RDL 101/42 SRN VOR/DME).

MCL: VAKON, FL110

Path Terminator	Waypoint Identifier	Fly Over	Course °M(°T)	Magnetic Variation	Distance (NM)	Turn Direction	Altitude (ft)	Speed Limit (IAS)	Navigation Specification
IF	FARAK	-	-	-	-	-	-	-	RNAV 1
TF	SRN	-	074 (076.9)	-	24.7	-	-	-	RNAV 1
TF	TZO	-	101 (104.1)	-	21.1	-	-	-	RNAV 1
TF	VAKON	-	100 (103.0)	-	21.4	-	FL110	-	RNAV 1

VAKON 5X

IRKED proceed on TR 123° (RDL/QDR 303 SRN VOR NDB) to SRN VOR NDB/DME, then continue on TR 101° (RDL/QDR 101 SRN VOR NDB or RDL/QDR 282 TZO VOR NDB) to TZO VOR NDB, then TR 100° (RDL/QDR 100 TZO VOR NDB or RDL 101 SRN VOR) direct to VAKON (RDL/QDR 100/21 NM TZO VOR NDB/DME or RDL 101/42 SRN VOR/DME).

MCL: VAKON, FL110

Path Terminator	Waypoint Identifier	Fly Over	Course °M(°T)	Magnetic Variation	Distance (NM)	Turn Direction	Altitude (ft)	Speed Limit (kt)	Navigation Specification
IF	IRKED	-	-	-	-	-	-	-	RNAV 1
TF	SRN	-	123 (125.8)	-	24.7	-	-	-	RNAV 1
TF	TZO	-	101 (104.1)	-	21.1	-	-	-	RNAV 1
TF	VAKON	-	100 (103.0)	-	21.4	-	FL110	-	RNAV 1

WAYPOINT LIST

Waypoint Identifier	Coordinates
MC501	45°34'29.38" N 008°18'56.27" E
MC502	45°35'29.06" N 008°14'40.42" E
MC504	45°19'20.19" N 007°46'50.95" E
MC506	45°28'10.75" N 007°31'04.23" E
MC511	45°00'14.63" N 009°50'55.83" E
MC512	45°26'37.34" N 008°00'22.54" E
MC514	45°38'02.49" N 008°15'22.94" E
MC516	45°38'04.59" N 008°17'14.59" E
MC519	45°40'03.71" N 007°54'52.02" E
MC523	45°32'39.02" N 007°58'38.15" E
MC524	45°38'36.98" N 007°43'48.21" E